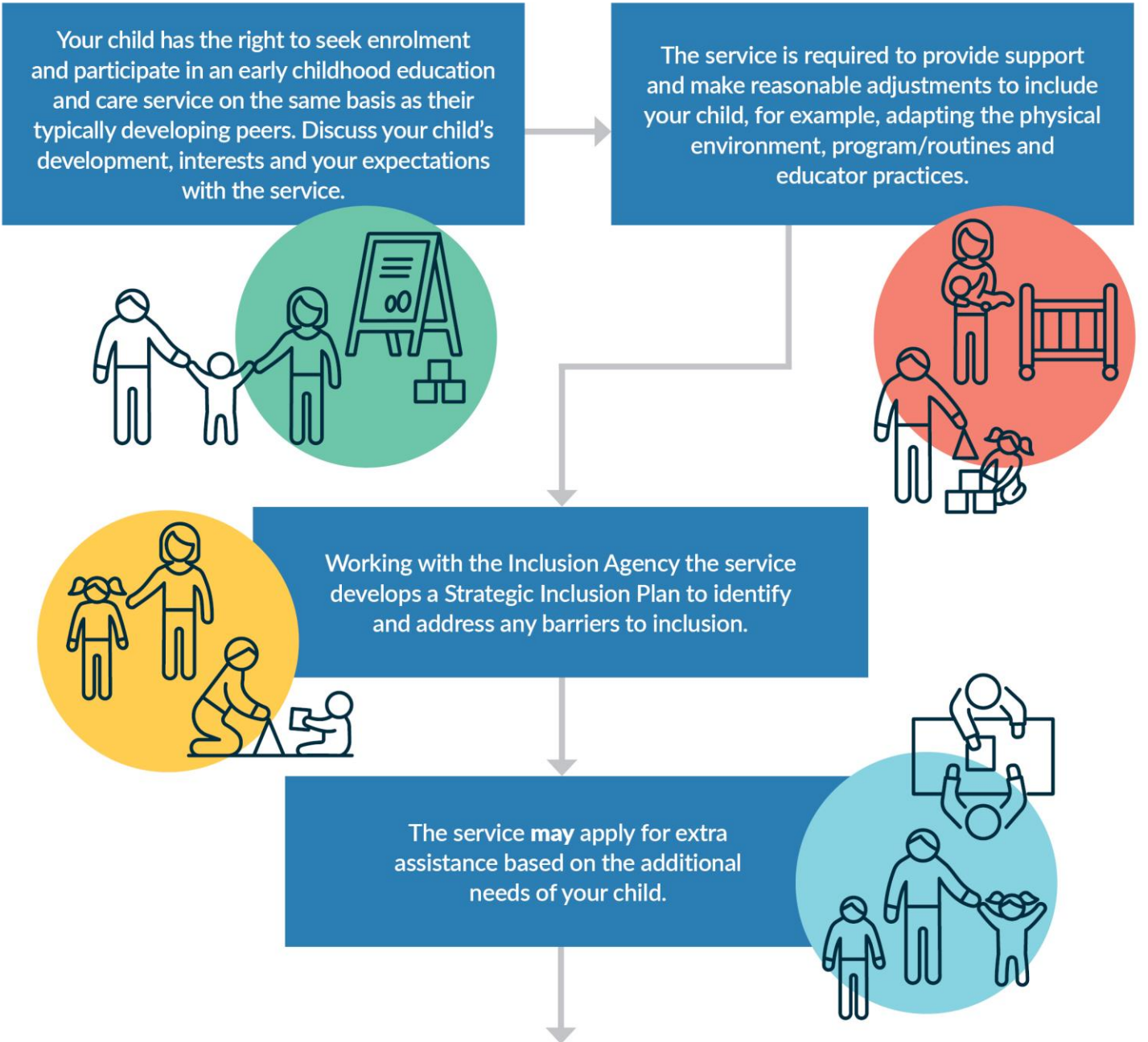




# How the Inclusion Support Program can assist your early childhood education and care service to include your child



## Support options available

<p>Existing capacity and capability (underpinned by the principles of equity and inclusion within the National Quality Standard and approved learning frameworks)</p>	<p>Inclusion Agency advice and ongoing support including Strategic Inclusion Planning and access to specialist equipment</p>	<p>Immediate or short-term assistance</p> <ul style="list-style-type: none"> <li>• Additional educator (up to 12 weeks)</li> <li>• Flexible and responsive projects to help services include all children</li> </ul>	<p>Longer-term assistance</p> <ul style="list-style-type: none"> <li>• Additional Educator</li> <li>• Family Day Care Top Up payment</li> <li>• Innovative projects to help services include all children</li> </ul>
---	--	--	--